

Quality-Oriented, Customer First

Ningbo Huizhan Automotive Technology Co., Ltd. will continue to uphold the business philosophy of "quality-oriented, customer first", continuously improve its core competitiveness, and provide customers with better products and services. We look forward to working with more partners to create a better future!



ADD.RM 2503, Tiantong South Rd. 1359, Yinzhou Distric, Ningbo, China



HP:+86 18662702170



www.hzcarparts.com



eunicetay@hzcarparts.com



N B H Z P T

Quality-Oriented, Customer First

Ningbo Huizhan Automotive Technology Co., Ltd.

CONTENTS

ENTERPRISE INTRODUCTION ----- 01

PRODUCTS AND SERVICES ----- 02-03

STRATEGIC PARTNERS AND CUSTOMIZED SERVICES ----- 04

STRICT QUALITY MANAGEMENT AND TESTING ----- 05

LAYOUT IN THE NEW ENERGY FIELD ----- 06-07

EXTENSIVE COOPERATION NETWORK ----- 08-09

SERIES PRODUCTS ----- 10-22

COMPANY PROFILE

Ningbo Huizhan Automotive Technology Co., Ltd. has established a good reputation in the field of automotive engine parts manufacturing with exquisite craftsmanship and excellent quality since 2018. As an enterprise integrating industry and trade, we focus on providing customers with high-quality professional solutions for automotive engine parts.

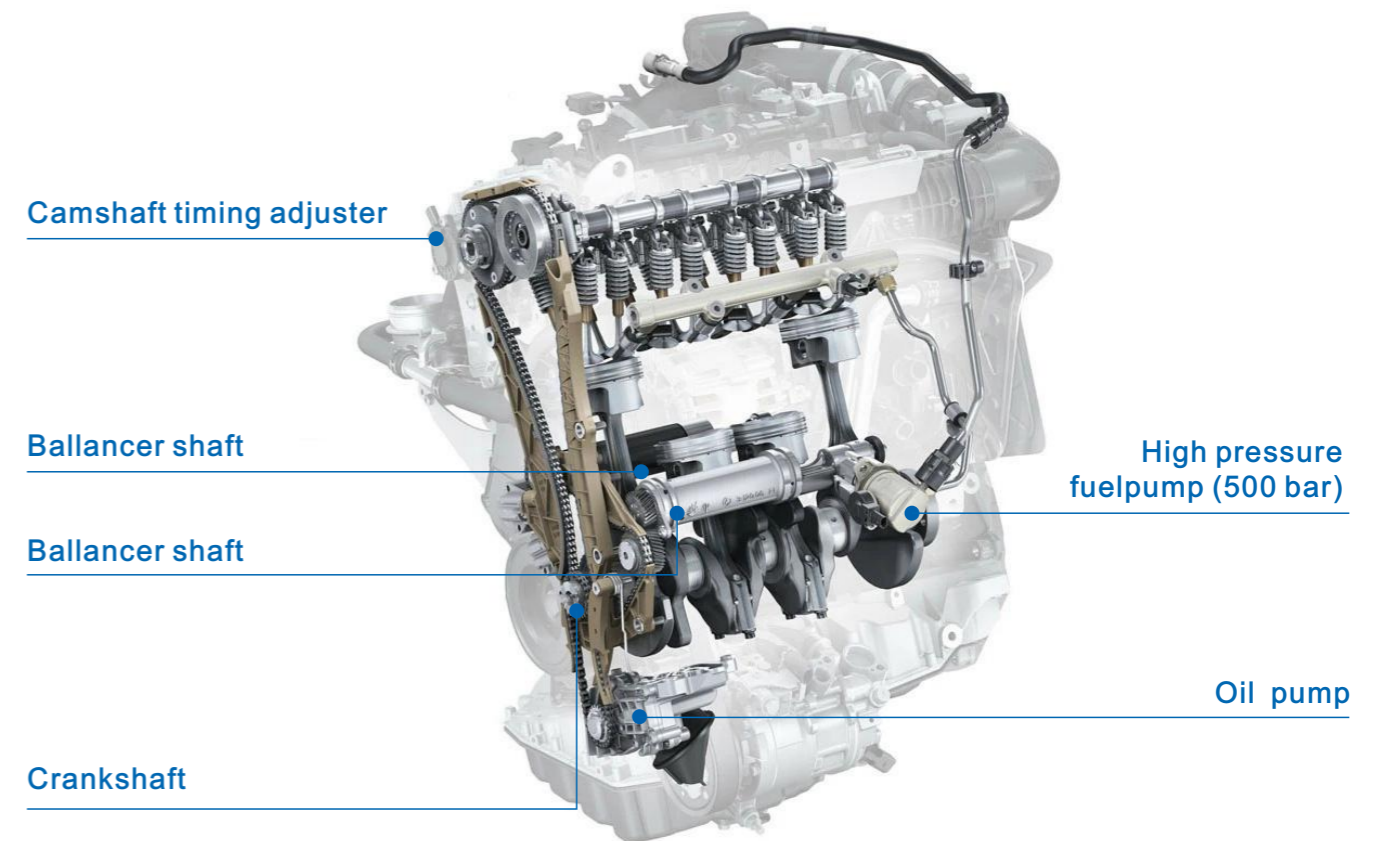


PRODUCTS AND SERVICES



Professional production line: We specialize in the production of automotive engine Oil Pumps, Vacuum Pumps, Camshafts, variable Valve Timing Unit Camshaft Sprocket (VVT) gears and Diesel Engine Glow Plug and other parts to ensure that each product complies industry standards.

Comprehensive products and strong engineering capabilities: We have a comprehensive product line to meet the needs of different customers. At the same time, we have strong engineering capabilities, whether it is customized design or production, we can respond quickly and provide professional solutions.



STRATEGIC PARTNERS AND CUSTOMIZED SERVICES



Strategic Partners Of OE Parts

We have established close strategic partnerships with many well-known automotive OEM parts companies and become their global sellers of OE parts.



Development Capabilities

We have strong R&D and manufacturing capabilities, and can reverse engineer or develop products for customers, and provide high-quality products that comply industry standards according to customer requirements.



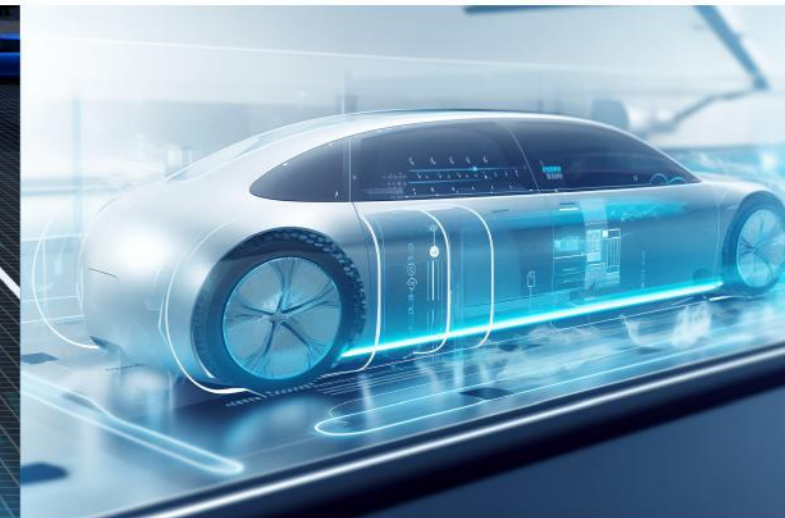
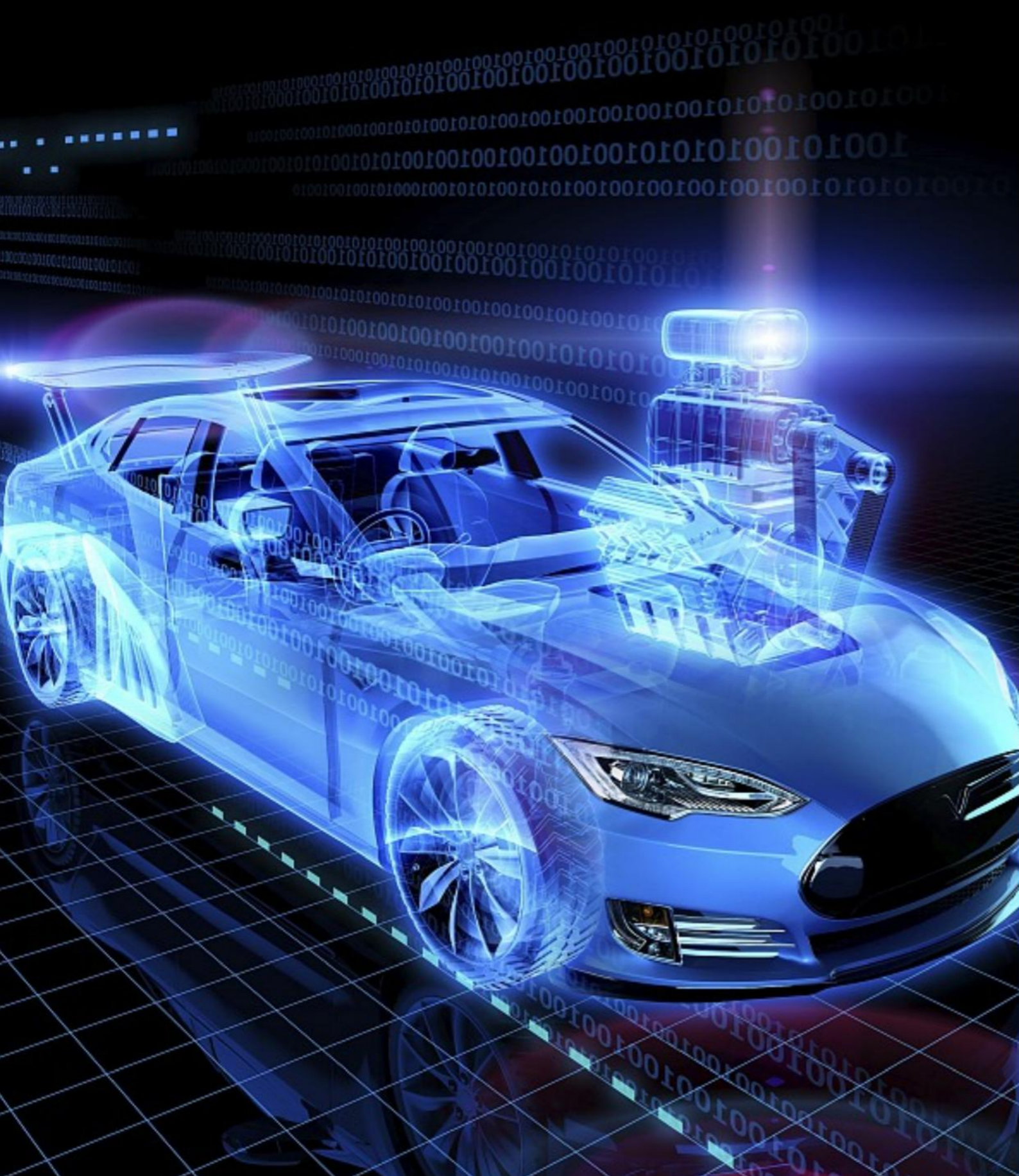
STRICT QUALITY MANAGEMENT AND TESTING

Adhere to OEM standards: We always adhere to strict OEM standards, from the procurement of raw materials to the production process, and then to the final quality inspection, we control strictly to ensure that each product comply the vehicle and OEM standards.

Testing and verification: For each product we develop, we conduct a one-year vehicle road test on the vehicle in accordance with the OEM standard to verify the matching of the new product with the vehicle electronic system and sensor. At the same time, we will also carry out a reliability test of up to 600 hours on the engine to verify the stability of the product during its life cycle.

LAYOUT IN THE NEW ENERGY FIELD

We keep up with the development trend of the automotive industry and pay active attention to the field of new energy vehicles. At present, we have successfully developed and put into mass production of scroll compressors that are widely used in new energy vehicles, providing efficient and reliable parts for the new energy vehicle industry.





EXTENSIVE COOPERATION NETWORK

Our strategic partners are all over the world, including well-known brands such as Mercedes-Benz, BMW, Volkswagen, PSA, Isuzu, Ford, Volvo, JMC, etc., which provides us with a broader market space and more cooperation opportunities.



OIL PUMPS



JAGUAR LAND ROVER

NAME
Oil & Vacuum Pump 2.0T

PN
LR087668

APPLICATION
2017–2024 Range Rover Evoque
2017 Range Rover Sport 2014–2017 Discovery Sport
2015–2017 Discovery 5 2017–2020 New Defender
2017–2020 Range Rover Velar



VW

NAME
EA888 2.0T Oil Pump

PN
06H115105

APPLICATION
Magotan/PASSAT
AUDIA4/A6/Q5 2.0T



BMW

NAME
BMW 1.6T

PN
11417647376

APPLICATION
BMW MINI 1.6T Oil Pump



BMW

NAME
BMW 1.6T

PN
9818786080 Vacuum pump

APPLICATION
BMW MINI 1.6T Vacuum pump

OIL PUMPS

FORD

NAME V348 2.4L Oil Pump

PN 9P2-6600-AA

APPLICATION V348/N800/V362/J351/N350 2.4 tdc



JMC

NAME VM Oil Pump

PN 1011100RAA

APPLICATION X8

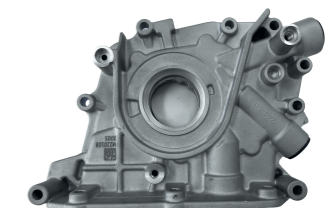


FORD

NAME 1.5Sigma MT Oil Pump

PN CN1G 6600 CA

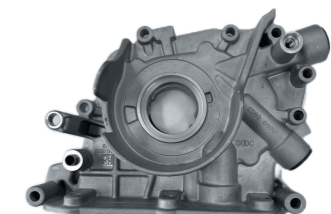
APPLICATION FOCUS 1.6/ESCORT 1.5/ECOSPORT 1.5 MT



NAME 1.5Sigma AT Oil Pump

PN ED8G 6600 FB

APPLICATION ESCORT 1.5 AT



OIL PUMPS

ISUZU

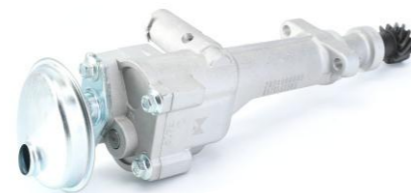
NAME 4JB1 Oil Pump
 PN 8973859850
 APPLICATION NHR/100P



NAME 4JB1 Oil Pump
 PN 8973859880
 APPLICATION 600P /4KH1



NAME 4JB1 Oil Pump
 PN 8970697383
 APPLICATION TFR-54



JMC

NAME 4D30 Oil Pump
 PN KN3-6600-AA
 APPLICATION N800/N310/4D30/D-MAX



OIL PUMPS

JMC

NAME 4JB1 Oil Pump
 PN 1011100AA
 APPLICATION TFR98



NAME 4JB1 Oil Pump
 PN 1011100SD
 APPLICATION Transit Euro III/N720/Transit (493ZLQ3)
 JMC N720(493ZLQ4/ZLQ5)
 JMC FORD TRANSIT(493ZLQ4)



NAME 4JB1 Oil Pump
 PN 1011100BB
 APPLICATION 4JB1-98



NAME 4JB1 Oil Pump
 PN 1011100SC/SZ
 APPLICATION Transit Euro II/EF/493/2.8



CAMSHAFTS

VW

NAME EA888 1.8T/ 2.0T Camshaft

PN 06J 109 021 G、06J 109 021 H

APPLICATION VW Magotan, Tiguan, Passat, Golf;
Skoda superd, octaiva, AUDI A3、A4、A6、Q5



JMC

NAME 4D30 Intake Camshaft、4d30 Exhaust Camshaft

PN CN3-6A270-AK、CN3-6A273-AK

APPLICATION N800/N310/4D30/D-MAX



ISUZU

NAME 4JB1 Camshaft

PN 1006011TAR

APPLICATION JMC493



CAMSHAFTS

BENZ

NAME M276 3.0L Camshaft

PN 2760505101、2760505201、2760505301、2760500800

APPLICATION Mercedes-Benz S-class, E-class, CLS, SLK,
GLK and other high-level models



NAME M274 2.0T Intake Camshaft

PN 2740501900

APPLICATION Mercedes-Benz A-class, B-class, C-class, E-class,
CLC, SLK, GLK and other high-level models



NAME M274 2.0T exhaust Camshaft

PN 2740504400

APPLICATION Mercedes-Benz A-class, B-class, C-class, E-class,
CLC, SLK, GLK and other high-level models



CAMSHAFTS

FORD

NAME V348 Intake Camshaft
 PN 9C19-6A270-AA
 APPLICATION Ford Transit 2.4/2.2 intake



NAME V348 Intake Camshaft
 PN 9C19-6A273-AA
 APPLICATION Ford Transit 2.4/2.2 exhaust



NAME GP2 EXHAUST CAMSHAFT
 PN GP2-6A273-AB
 APPLICATION Ford Transit 2.2 exhaust



NAME V362 Camshaft
 PN BK2Q-6A270-AA
 APPLICATION Ford Transit 2.0 intake



Variable Valve Timing Unit Camshaft Sprockets (VVT)

BENZ

NAME M276 VVT
 PN 2760503600
 APPLICATION Mercedes-Benz S-class, E-class, CLS, SLK, GLK and other high-level models



NAME M276 VVT
 PN 2760503700
 APPLICATION Mercedes-Benz S-class, E-class, CLS, SLK, GLK and other high-level models



NAME M276 VVT
 PN 2760503800
 APPLICATION Mercedes-Benz S-class, E-class, CLS, SLK, GLK and other high-level models



NAME M276 VVT
 PN 2760503900
 APPLICATION Mercedes-Benz S-class, E-class, CLS, SLK, GLK and other high-level models



Variable Valve Timing Unit Camshaft Sprockets (VVT)

BENZ

NAME M272 VVT

PN 2720506847(The intake is the same as exhaust)

APPLICATION Mercedes-Benz C-class, E-class, S-class, GLK, ML and other models



NAME M272 VVT

PN 2720505247 (Exhaust)

APPLICATION Mercedes-Benz C-class, E-class, S-class, GLK, ML and other models



NAME M272 VVT

PN 2720505347 (Exhaust)

APPLICATION Mercedes-Benz C-class, E-class, S-class, GLK, ML and other models



NAME M274 VVT

PN 26000502100 (intake) 、 26000502200 (Exhaust)

APPLICATION Mercedes-Benz C-Class, Mercedes-Benz E-Class, Mercedes-Benz GLC, Mercedes-Benz GLK 260, and Infiniti Q50.



Variable Valve Timing Unit Camshaft Sprockets (VVT)

LAND ROVER

NAME 2.0T VVT

PN LR095897、LR033733

APPLICATION Land Rover 2.0T fit models: Discovery Sport 2015, Range Rover 2013, Range Rover Evoque 2012, Range Rover Sport 2014
Jaguar XF2.0T, XJ, XK, XE, XJL models
Volvo XC60, S60, V60, S80, XC90
Ford Mustang, Explorer



BMW

NAME N52

PN 11367583207

APPLICATION BMW 740Li



NAME N52

PN 11367583208

APPLICATION Mainly used in the BMW 740Li



AUDI GLOW PLUGS

AUDI

ITEM NUMBER	ENGINE	MODEL
GP004	1Y	89, 8A, B3, 1.9 D
	AAZ	8C, B4, 1.9 TD
	CR, JK	81, 85, B2, 1.6 D
	CY	81, 85, B2, 1.6 TD
	JK	89, 8A, B3, 1.6 D
	JK	89, 8A, B3, 1.6 TD
	RA, SB	81, 85, B2, 1.6 TD
	CY	89, 8A, B3, 1.6 TD
	RA, SB	44, C3, 2.4 D
	3D	4A, C4, 2.4 D
	AAS	43, C2, 2.0 D
	CN	44, C3, 2.0 D
	CN	44, C3, 2.0 D Turbo
	DE, NC	44, C3, 2.0 TD
	AFF, AFN, AHH, AHU, AVG	8D, B5, 1.9 TDI
	AFN, AVG	8D, B5, 1.9 TDI quattro



OE NUMBER

AUDI	NGK	BERU	BOSCH	HKT	HIDRIA
N10213002	DP2 Y-918J	GN857 0100226173	GLP002 0250201032	B-080	
N 105 798 03					
N10579803					
068 905 061					
N 019 081 1					
N 019 081 2					
N 019 081 4					
N 019 097 1					
N 019 100 1					
N 019 100 2					
N 019 100 5					
N 019 100 6					
N 102 130 01					
N 102 130 02					
N 105 798 05 (CERAMIC)					

AUDI GLOW PLUGS

AUDI

ITEM NUMBER	ENGINE	MODEL
GP006	1Z	8C, B4, 1.9 TDI
	1T	44, C3, 2.5 TDI
	AAT, ABP	4A, C4, 2.5 TDi
	AGR, AHF, ALH, ASV	8L, 1.9 TDI
	ASZ	8L, 1.9 TDI quattro
	ASZ, ATD	8L, 1.9 TDI
	1Z, AFF, AFN, AHH, AHU, AJM, AVG	8D, B5, 1.9 TDI
	AFN, AJM, ATJ, AVG	8D, B5, 1.9 TDI quattro
	AHU	8D, B5, 1.9 DUO
	AVB, AVF, AWX	8E, B6, 1.9 TDI
	1Z, AHU	4A, C4, 1.9 TDI
	AAT, AEL	4A, C4, 2.5 TDI
	AEL	4A, C4, 2.5 TDI quattro
	AFN, AVG	4B, C5, 1.9 TDI
	1Z, AHU	8G7, 1.9 TDI



OE NUMBER

AUDI	NGK	BERU	BOSCH	HKT	HIDRIA
N10140105	DP4 Y-732J	GN855 0100226227	GLP003 0250202022	B-077	H1 659
N 105 798 03					
N 105 798 03					
N 101 401 01					
N 101 401 02					
N 101 401 03					
N 101 401 04					
N 101 401 05					
N 105 798 05 (CERAMIC)					

AUDI GLOW PLUGS


AUDI		
ITEM NUMBER	ENGINE	MODEL
GP008	AFB, AKN	8D, B5, 2.5 TDI
	AKE	8D, B5, 2.5 TDI quattro
	AKE, BAU, BDH	8E, B6, 2.5 D
	AYM, BCZ, BDG, BFC	8E, B6, 2.5 TDI quattro
	BDG	8E, B6, 2.5 TDI
	BCZ, BDG, BFC	8E, B7, 2.5 TDI
	BCZ, BDG, BFC	8H, B6, B7, 2.5 TDI
	AFB, AKE, AKN, AYM, BAU,	4B, C5, 2.5 TDI
	BCZ, BDG, BDH, BFC, BND	4B, C5, 2.5 TDI quattro
	AFB, AKE, AKN, BAU, BDH	4D, 2.5 TDI
	AFB, AKE, AKN	4D, 2.5 TDI quattro
	AKF	4D, 3.3 TDI quattro
	ASE	4E, 4.0 TDI quattro
	AKE, BAU, BCZ	4BH, 2.5 TDI quattro



OE NUMBER					
AUDI	NGK	BERU	BOSCH	HKT	HIDRIA
059 963 319					
059 963 319 A	DP31 Y-501U	GN008 0100226338	GLP031 0250202102	B-111	H1 961
059 963 319 H					

AUDI GLOW PLUGS

AUDI		
ITEM NUMBER	ENGINE	MODEL
GP005	AZV, BKD	8P, 2.0 TDI
	BLB, BNA	8P, 2.0 TDI quattro
	BLB, BNA	8E, B7, 2.0 TDI
	BLB, BNA	4F, C6, 2.0 TDI



OE NUMBER					
AUDI	NGK	BERU	BOSCH	HKT	HIDRIA
N10579802	DP48 YE-14	GE101 0100266009	GLP093 0250403002	PM-405	H1 993

ITEM NUMBER	ENGINE	MODEL
GP106	BMN	8P, 2.0 TDI quattro
	BMN, BUY	8P, 2.0 TDI
	BRD, BRE, BRF, BVA, BVF, BVG	8E, B7, 2.0 TDI
	BRD, BVA	8E, B7, 2.0 TDI quattro
	BRE, BRF, BVG	4F, C6, 2.0 TDI



OE NUMBER					
AUDI	NGK	BERU	BOSCH	HKT	HIDRIA
N 105 798 03	DP55	CGP003		PM-406	H5122
N 105 798 05 (CERAMIC)	CZ-304	0106671802			

BENZ GLOW PLUGS

BENZ		
ITEM NUMBER	ENGINE	MODEL
GP001	OM 615.963	631, 2.0 D
	OM 616	631, D
	OM 616.963	631, D (631._0)
	OM 615.970	631, D (631._2)
	OM 616.963	631, D (631._3, 631._4)
	OM 616	W201, D 2.0
	OM 616	W201, D 2.5
	OM 601.911	W115, 220 D (115.110)
	OM 615.912	W115, 200 D (115.115)
	OM 615.912	W115, 240 D 3.0 (115.114)
	OM 615.913	C123, 300 C Turbo-D (123.153)
	OM 617.910	124, E 300 T Turbo-D (124.193)
	OM 617.952	124, E 300 Turbo-D (124.133)
	OM 617.952	124, E 300 T Turbo-D 4-matic (124.393)
	OM 603.960	124, E 300 Turbo-D 4-matic (124.333)
	OM 616.917	W460, 250 GD
	OM 603.963	W463, 300 GD / G 300 (463.307)
	OM 602.930	W463, 300 GD / G 300 (463.327, 463.328)
	OM 603.931	W463, 350 G Turbo-D (463.300)
	OM 603.931	W463, 350 Turbo GD (463.320, 463.321)
	OM 603.972	W460, 240 GD
	OM 616.936	W460, 300 GD
	OM 615.939	206 D 2.2
	OM 615.939	S124, 200 T D (124.180)
	OM 615.917	S124, 250 T D (124.185)
	OM 601.912	S124, 250 TD Turbo (124.188)
	OM 602.912	S124, 300 T D (124.190)
	OM 602.912	S124, 300 T Turbo-D (124.193)
	OM 602.962	S124, 300 T Turbo-D
	OM 603.912	S124, 300 T Turbo-D 4-matic (124.393)
	OM 603.960	S123, 240 T D (123.183)
	OM 603.960	S123, 300 T D (123.190)
	OM 603.960	S123, 300 T Turbo-D (123.193)
	OM 603.963	W124, 200 D (124.120)
	OM 615.937	W124, 250 D (124.125)
	OM 616.912	W124, 300 D (124.130)
	OM 617.912	W124, 300 D 4-matic (124.330)
	OM 617.912	W124, 300 Turbo-D (124.133)
	OM 617.952	W124, 300 Turbo-D 4-matic (124.333)
	OM 603.912	W123, 200 D
	OM 603.913	W123, 200 D (123.120)
	OM 603.913	W123, 220 D

BENZ GLOW PLUGS

BENZ		
ITEM NUMBER	ENGINE	MODEL
GP001	OM 603.960	W123, 220 D (123.126)
	OM 615.940	W123, 240 D (123.123)
	OM 603.963	W123, 300 D (123.130)
	OM 615.941	W123, 300 Turbo-D (123.133)
	OM 616.912	W140, S 350 Turbo-D (140.134)
	OM 617.912	901902, 2.9 212 D
	OM 617.952	903, 2.9 310 D 2.9
	OM 617.952	903, 2.9 310 D 4x4
	OM 603.971	903, 2.9 312 D 2.9
	OM 602.980	903, 2.9 312 D 2.9 4x4
	OM 616.937	904, 2.9 412 D
	OM 616.939	904, 2.9 412 D 4x4
	OM 617.913	601, 2.4 D 407
	OM 616.913	602, 2.4 D 307
	OM 616.913	601, 2.9 D 209
	OM 616.939	602, 3.0 D 309
	OM 617.913	611, 2.4 407 D
	OM 615	611, 3.0 409 D
	OM 615.910	309310328, 2.2 L 405 D
	OM 616.910	309310328, 2.2 L 406 DG
	OM 616.910	309310328, 2.4 L 407 D
	OM 616.914	2.4 507 D



OE NUMBER				
BENZ	NGK	BERU	BOSCH	HKT
A0001597701	DP1 Y-924J	GLP001	GV602	100221106
A0001597702		0250201039	0100221106	
A0001597703				

BENZ GLOW PLUGS

BENZ

ITEM NUMBER	ENGINE	MODEL
GP063	OM 668.940	W168, A 160 CDI (168._06)
	OM 668.941	W168, A 170 CDI (168._08)
	OM 668.942	W168, A 160 CDI (168._07)
	OM 668.914	W168, A 170 CDI (168._09)
	OM 668.914	414, 1.7 CDI (414.700)



OE NUMBER

BENZ	NGK	BERU	BOSCH	HKT
A0011592701	DP38 Y-746J	GLP102 250202041	GN010 100226365	B-112

ITEM NUMBER	ENGINE	MODEL
GP064	OM 602.982	210, E 290 Turbo-D (210._17)
		901902, 2.9 210 D
		901902, 2.9 212 D
	OM 602.980	903, 2.9 310 D 2.9
		903, 2.9 310 D 4x4
		903, 2.9 312 D 2.9
	OM 602.984	903, 2.9 312 D 2.9 4x4
		904, 2.9 410 D
		904, 2.9 410 D 4x4
	OM 602.984	904, 2.9 412 D
		904, 2.9 412 D 4x4
		2.9 512 D
	OM 602.985	2.9 612 D
		2.9 812 D
		2.9 O 812



OE NUMBER

BENZ	NGK	BERU	BOSCH	HKT
A0011592601	DP41 Y-929U	GLP021 0250202140	GN961 0100226250	B-067

BENZ GLOW PLUGS

BENZ

ITEM NUMBER	ENGINE	MODEL
GP065	OM 605.911	202, C 220 D (202.021)
		202, C 220 D (202.121)
		202, C 220 T D (202.182)
		202, C 250 D (202.125)
	OM 606.910	124, E 250 D (124.126, 124.129)
		124, E 250 TD (124.186)
		124, E 300 D (124.131)
		124, E 300 TD (124.191)



OE NUMBER

BENZ	NGK	BERU	BOSCH	HKT
A0011591501	DP30 Y-930U	GLP025 250201035	GN860 100226258	B-095

ITEM NUMBER	ENGINE	MODEL
GP108	OM 607.951	W176, A 160 CDI / d (176.011)
		W176, A 180 CDI / d 1.5 (176.012)
		W242, W246, B 160 CDI / d (246.211)
		W242, W246, B 180 CDI / d 1.5 (246.212)
		415, 108 CDI
		415, 109 CDI
		415, 111 CDI
		C117, CLA 180 CDI / d (117.312)
		X117, CLA 180 d (117.912)
		X156, GLA 180 CDI / d (156.912)



OE NUMBER

BENZ	NGK	BERU	BOSCH	HKT
A4151590001	DP77 Y-1035 AS	GLP221 250403012	GE110 100266032	PN-900

BENZ GLOW PLUGS

BENZ		
ITEM NUMBER	ENGINE	MODEL
GP066	OM 611.960	202, C 200 CDI (202.134)
	OM 611.962	202, C 200 T CDI (202.194)
	OM 646.962	202, C 220 CDI (202.133)
	OM 611.962	202, C 220 T CDI (202.193)
	OM 646.963	203, C 200 CDI (203._04)
	OM 612.962	203, C 220 CDI (203._06)
	OM 646.962	203, C 270 CDI (203._16)
	OM 646.963	203, C 200 CDI (203._07)
	OM 646.963	203, C 220 CDI (203._08)
	OM 611.962	CL203, C 220 CDI
	OM 646.962	CL203, C 220 CDI (203._06)
	OM 612.962	CL203, C 200 CDI (203._07)
	OM 612.967	CL203, C 220 CDI (203._08)
	OM 646.966	CL203, CLC 200 CDI (203.707)
	OM 611.961	CL203, CLC 220 CDI (203.708)
	OM 612.961	209, CLK 220 CDI (209._08)
	OM 613.961	210, E 290 Turbo-D (210._17)
	OM 628.961	210, E 200 CDI (210._07)
	OM 646.951	210, E 220 CDI (210._06)
	OM 646.961	210, E 270 CDI
	OM 647.961	210, E 270 CDI (210._16)
	OM 648.961	210, E 320 CDI (210._26)
	OM 612.965	211, E 400 CDI (211._28)
	OM 612.966	211, E 200 CDI (211._04)
	OM 612.966	211, E 220 CDI (211._06)
	OM 628.962	211, E 270 CDI (211._16)
	OM 612.963	211, E 280 CDI (211._23)
	OM 628.963	211, E 320 CDI (211._26)
	OM 613.960	W463, G 270 CDI (463.322, 463.323)
	OM 628.960	W461, G 270 CDI
	OM 648.960	W463, G 400 CDI (463.309)
	OM 611.981	W463, G 400 CDI (463.332, 463.333)
	OM 611.987	W163, ML 270 CDI (163.113)
OM 612.981	W163, ML 400 CDI (163.128)	

BENZ GLOW PLUGS

BENZ		
ITEM NUMBER	ENGINE	MODEL
GP066	OM 646.984	W220, S 320 CDI (220._26)
		W220, S 400 CDI (220._28)
	OM 646.985	W220, S 320 CDI (220._25)
		901902, 2.1 211 CDI
	OM 646.986	901902, 2.1 213 CDI
		901902, 2.1 208 CDI
	OM 646.986	901902, 2.7 216 CDI
		906, 2.1 309 CDI
	OM 646.989	906, 2.1 311 CDI
		906, 2.1 311 CDI 4x4
	OM 646.990	906, 2.1 313 CDI
		906, 2.1 313 CDI
	OM 612.981	906, 2.1 315 CDI
		906, 2.1 315 CDI 4x4
	OM 647.981	903, 2.1 311 CDI
		903, 2.1 311 CDI 4x4
	OM 646.701	903, 2.1 313 CDI
		903, 2.1 313 CDI 4x4
	OM 611.980	903, 2.1 308 CDI
		903, 2.7 316 CDI
	OM 646.980	903, 2.7 316 CDI 4x4
		906, 2.1 209 CDI
	OM 646.982	906, 2.1 211 CDI
		906, 2.1 213 CDI
	OM 646.982	906, 2.1 215 CDI
		906, 2.1 411 CDI
	OM 611A (60 KW CDI)	906, 2.1 415 CDI
		904, 2.1 411 CDI
	OM 611LA (75 KW CDI)	904, 2.1 411 CDI 4x4
		904, 2.1 413 CDI
	OM 646.980	904, 2.1 413 CDI 4x4
		904, 2.1 408 CDI
	OM 646.981	904, 2.7 416 CDI
904, 2.7 416 CDI 4x4		
OM 646.983	905, 2.7 616 CDI	
OM 646.981		

BENZ GLOW PLUGS

BENZ

ITEM NUMBER	ENGINE	MODEL
GP066		906, 2.1 509 CDI
		906, 2.1 511 CDI
		906, 2.1 511 CDI 4x4
		906, 2.1 513 CDI
		906, 2.1 515 CDI
		906, 2.1 515 CDI 4x4
		909, 2.1 311 CDI
		909, 2.1 411 CDI
		638/2, V 200 CDI
		638/2, V 220 CDI
		W639, 2.2 CDI
		W639, 2.0 CDI
		W639, 2.0 CDI 4-matic
		W639, 2.2 CDI 4-matic
		638, 2.2 112 CDI
		638, 2.1 108 CDI
		638, 2.2 108 CDI
		638, 2.1 110 CDI
		638, 2.2 110 CDI
		W639, 2.1 109 CDI
		W639, 2.1 111 CDI
		W639, 2.1 115 CDI
		W639, 2.1 109 CDI 4x4
		W639, 2.1 111 CDI 4x4
		W639, 2.1 115 CDI 4x4



OE NUMBER

BENZ	NGK	BERU	BOSCH	HKT
A0011592801	DP11 Y-745U	GLP022 250202141	GN003 100226379	B-099

BENZ GLOW PLUGS

BENZ

ITEM NUMBER	ENGINE	MODEL
GP098	OM 604.910	202, C 220 D (202.021) 202, C 220 D (202.121)
	OM 604.915	202, C 220 T D (202.182)
	OM 605.910	202, C 200 D (202.122) 202, C 200 T D (202.180)
	OM 605.960	202, C 250 D (202.125)
	OM 604.912	202, C 250 T Turbo-D (202.188) 202, C 250 Turbo-D (202.128)
	OM 604.917	124, E 200 D (124.120)
	OM 605.912	210, E 220 D
	OM 605.962	210, E 220 D (210._04) 210, E 200 D (210._03)
	OM 605.962	210, E 250 D (210._10)
	OM 606.912	210, E 250 Turbo-D (210._15)
	OM 606.962	210, E 300 D (210._20) 210, E 300 Turbo-D (210._25)
	OM 606.964	W463, G 300 TD (463.308)
	OM 606.961	W463, G 300 TD (463.330, 463.331) W140, S 300 Turbo-D (140.135)



OE NUMBER

BENZ	NGK	BERU	BOSCH	HKT
A0011592001	DP16 Y-925J	GLP017 0250201054	GN948 0100226235	B-082

ITEM NUMBER	ENGINE	MODEL
GP176	OM 622.951	205, C 180 BlueTEC / d (205._36)
		205, C 200 BlueTEC / d (205._37)
		W447, 1.6 109 CDI / BlueTEC
		W447, 1.6 111 CDI / BlueTEC



OE NUMBER

BENZ	NGK	BERU	BOSCH	HKT
A6221590001	DP88 Y-1010 AS	GLP259 250403022	GE124 100266075	PN-901

BENZ GLOW PLUGS

BENZ

ITEM NUMBER	ENGINE	MODEL	
GP095	OM 604.910	631, D	
		631, D (631._0)	
		631, D (631._2)	
	OM 604.915	631, D (631._3, 631._4)	W201, D 2.5
			W201, Turbo-D 2.5 (201.128)
			202, C 200 D (202.120)
	OM 605.910	124, E 200 D (124.120)	124, E 250 Turbo-D (124.128)
			W460, 250 GD
	OM 605.960	W463, 250 GD (463.324, 463.325)	W461, 250 GD
			W461, 290 GD/G 290 D
	OM 604.912	W461, G 290 TD	W460, 300 GD
			S124, 200 T D (124.180)
	OM 604.917	S124, 250 T D (124.185)	S124, 250 TD Turbo (124.188)
			W124, 200 D (124.120)
			W124, 250 D (124.125)
	OM 605.912	W124, 250 Turbo-D (124.128)	901902, 2.3 208 D
			903, 2.3 308 D 2.3
			904, 2.3 408 D
	OM 605.962	904, 2.9 410 D	904, 2.9 410 D 4x4
			601, 2.3 D 208
			602, 2.3 D 308
	OM 606.912	601, 2.9 D 210	602, 2.9 D 310
			611, 2.3 408 D
			611, 2.9 410 D
	OM 606.962	2.3 508 D	638/2, V 230 TD
			638, 2.3 108 D
			638, 2.3 110 D
	OM 606.964	638, 2.3 110 TD	



OE NUMBER

BENZ	NGK	BERU	BOSCH	HKT
A0011592001	DP16 Y-925J	GLP017 0250201054	GN948 0100226235	B-082

BENZ GLOW PLUGS

BENZ

ITEM NUMBER	ENGINE	MODEL	
GP112	OM 640.940	OM 640.942	
		OM 640.941	
		OM 642.910	
	OM 640.942	OM 642.910	OM 642.960
			OM 642.961
			OM 642.920
	OM 642.960	OM 642.961	OM 629.910
			OM 642.850
			OM 642.910
	OM 642.961	OM 642.920	OM 642.921
			OM 642.921
			OM 642.884
	OM 642.920	OM 629.910	OM 642.884
			OM 642.884
			OM 642.975
	OM 629.910	OM 642.850	OM 629.912
			OM 642.940
			OM 642.950
	OM 642.850	OM 642.910	OM 629.911
			OM 642.930
			OM 642.932
	OM 642.910	OM 629.911	OM 642.932
			OM 642.896
			OM 642.896
	OM 642.921	OM 642.930	OM 642.896
			OM 642.896
			OM 642.898
	OM 642.921	OM 642.932	OM 642.992
			OM 642.992
			OM 642.992
	OM 642.884	OM 642.884	OM 642.993
			OM 642.896
OM 642.896			
OM 642.884	OM 642.884	OM 642.975	
		OM 642.975	
		OM 642.975	



OE NUMBER

BENZ	NGK	BERU	BOSCH	HKT
A0011595001	DP51 Y-8002AS	GLP202 250403008	GE105 100266011	B-129

BWM GLOW PLUGS

BWM

ITEM NUMBER	ENGINE	MODEL
GP001	M21 D24 (246DA)	E30, 324 d
		E30, 324 td
	M21 D24 (246TB)	E36, 318 tds
		E36, 325 td
	M41 D17 (174T1)	E36, 325 tds
		E46, 330 d 2.9
	M51 D25 (256T1)	E46, 330 xd 2.9
		E28, 524 d
	M21 D24 (246DB)	E28, 524 td
		E34, 524 td
	M57 D30 (306D1)	E39, 520 d
		E34, 525 td
	M21 D24 (246DA)	E34, 525 tds
		E39, 525 td
	M21 D24 (246TA)	E39, 525 tds
		E39, 525 d
	M47 D20 (204D1)	E39, 530 d
		E38, 725 tds
	M57 D25 (256D1)	E38, 730 d
		E53, 3.0 d



OE NUMBER				
BWM	NGK	BERU	BOSCH	HKT
12231288245	DP1 Y-924J	GV602 0100221106	GLP001 0250201039	B-081

BWM GLOW PLUGS

BWM

ITEM NUMBER	ENGINE	MODEL
GP014	M47 D20 (204D1)	E46, 318 d
		E46, 320 d



OE NUMBER					
BWM	NGK	BERU	BOSCH	HKT	HIDRIA
12232248059	DP32 Y-507J	GN024 0100226362	GLP093 0250403002	GLP040 0250202103	B-104

ITEM NUMBER	ENGINE	MODEL
GP081	M67 D39 (398D1)	E38, 740 d



OE NUMBER					
BWM	NGK	BERU	BOSCH	HKT	HIDRIA
12232248422	Dp14 Y-748U	Gn992 0100226300	GLP019 0250202042	B-098	H5122